

© NASA



IceSat
ASTER
Glacier
PolarScientists
CryosphereEarth
Reading
July2011
Imaging
Modelling
Ice
Observation
Greenland
NCEO
Antarctica
Cluster
Satellite
EOTech
Snow
RemoteSensing
Lidar
Radar
Melting
Photogrammetry
Change
Climate
CryoSat
Ocean

Remote Sensing for Polar Scientists



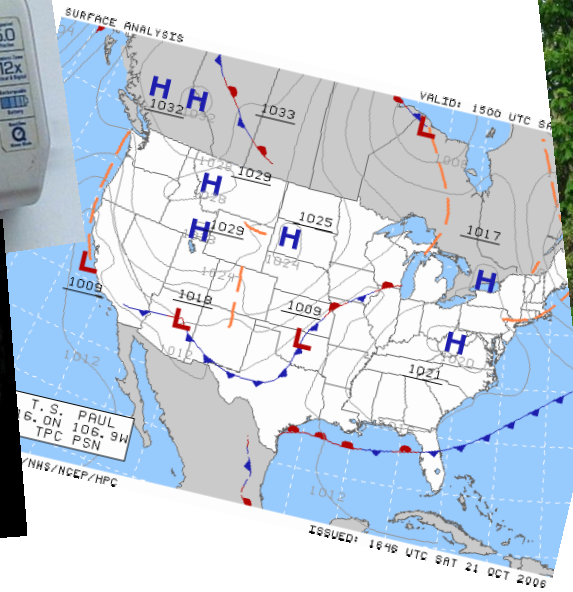
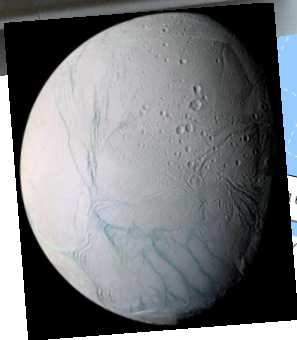
**National Centre for
Earth Observation**
NATURAL ENVIRONMENT RESEARCH COUNCIL

Earth Observation Technology Cluster

What is Remote Sensing?

IceSat
Antarctica
Greenland
NCEO
Satellite
EOTechCluster
Climate
Change
Snow
Remote Sensing
ESA
Observation
Imaging
Modelling
Ice
Reading
July 2011
Earth
Scientists
Glacier
MELTING
Photogrammetry
Ocean
Cryosat
Arctic

- Short Answer: Any type of information you gather where you aren't physically present...



Images: wikimedia commons, Google, NASA, ESA



**National Centre for
Earth Observation**
NATURAL ENVIRONMENT RESEARCH COUNCIL

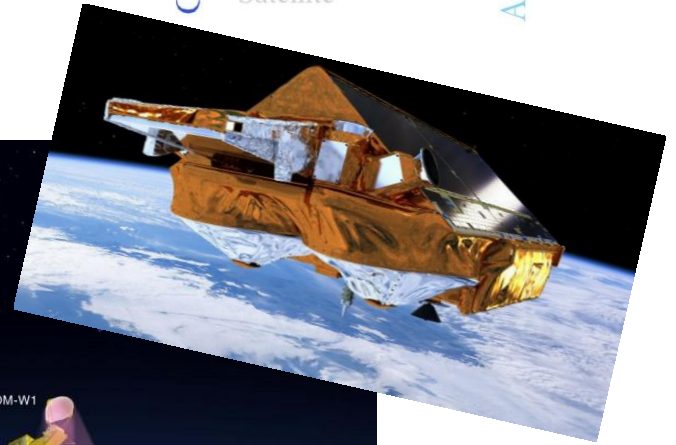
Earth Observation Technology Cluster



UK POLAR NETWORK

Satellites

IceSat
ASTER
Glacier
Radar
Polar
Scientists
Cryosphere
Earth
Imaging
Reading
July 2011
Modelling
Ice
ESA
Observation
Greenland
NCEO
Antarctica
Satellite
Cluster
EO
Tech
Climate
Snow
Remote
Sensing
Lidar
Melting
Photogrammetry
Change
Ocean
CryoSat



© ESA, NASA



National Centre for Earth Observation

NATURAL ENVIRONMENT RESEARCH COUNCIL

Earth Observation Technology Cluster



UK POLAR NETWORK

Airborne

CryoSat
Ocean
IceSat
ASTER
Glacier
Radar
Polar
Scientists
Cryosphere
Earth
Melting
Lidar
Imaging
Reading
July 2011
Photogrammetry
Modelling
Ice
Change
Snow
Remote Sensing
ESA
Observation
Greenland
Climate
EOT
Tech
Cluster
NCEO
Satellite
Antarctica



Images: Rob Bingham, NASA, BAS,



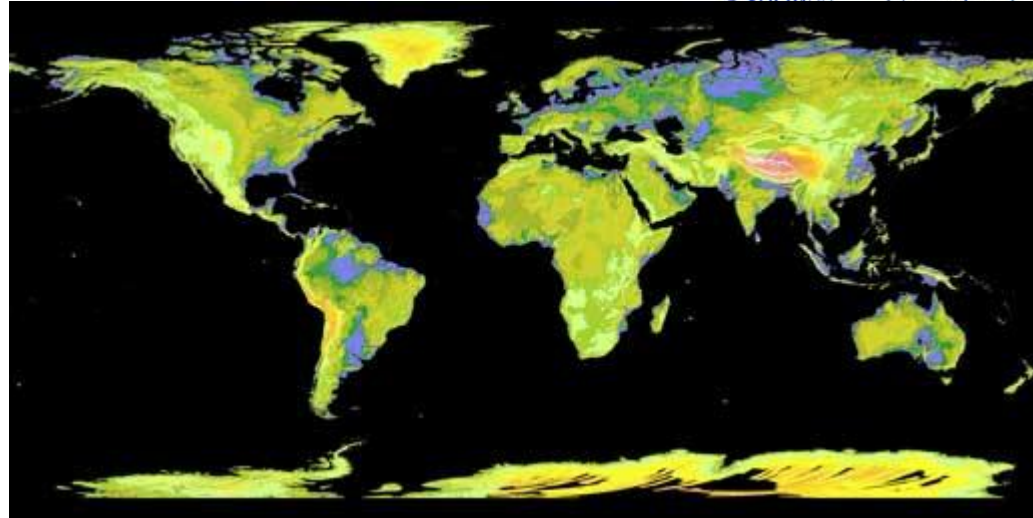
**National Centre for
Earth Observation**
NATURAL ENVIRONMENT RESEARCH COUNCIL

Earth Observation Technology Cluster

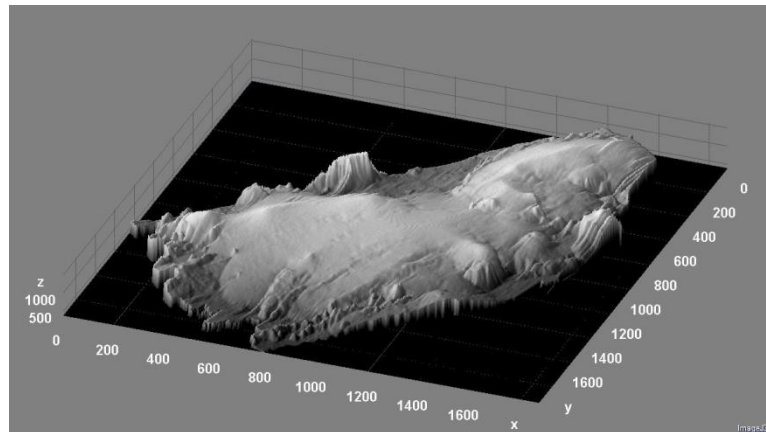
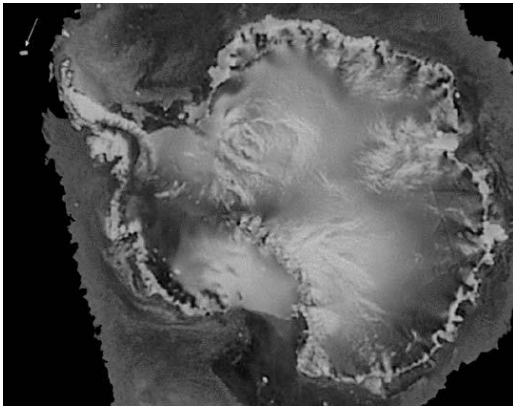
Passive vs. Active

IceSat
ASTER
Glacier
Radar
Polar
Scientists
Cryosphere
Earth
Melting
Imaging
Reading
July 2011
Photogrammetry
Modelling
Ice
Change
Snow
ESA
Observation
Antarctica

ASTER DEM, ©
NASA/JAXA



Quickscat, © NASA



Airborne LiDAR
© NERC

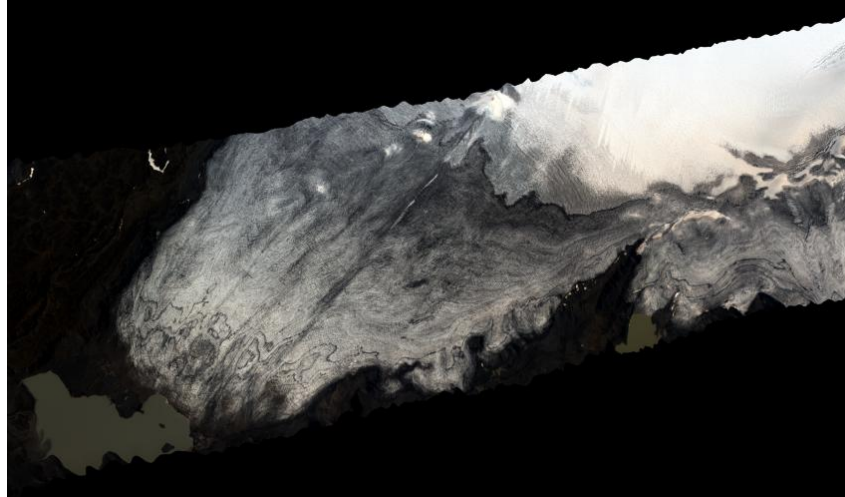


**National Centre for
Earth Observation**
NATURAL ENVIRONMENT RESEARCH COUNCIL

Earth Observation Technology Cluster

Passive vs. Active

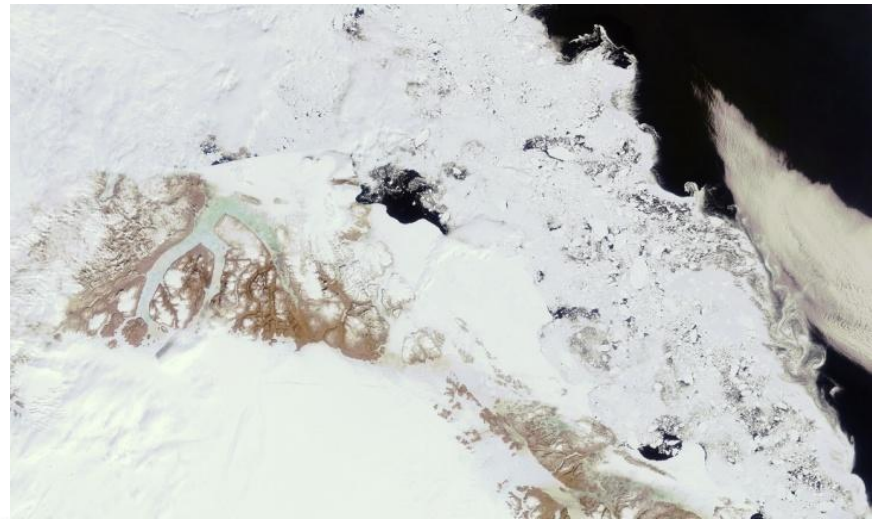
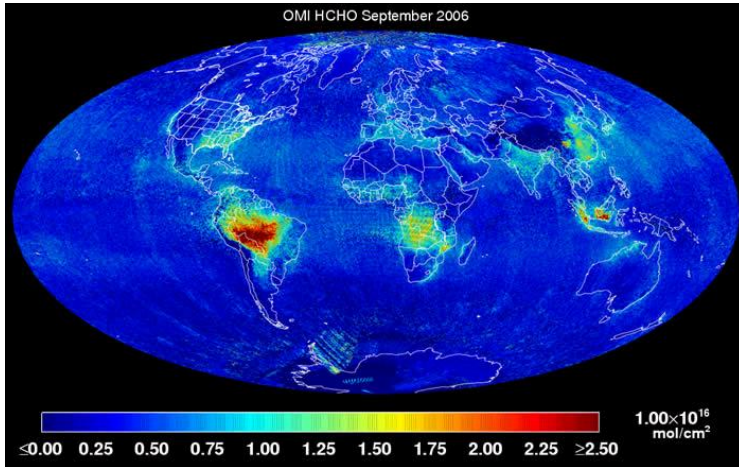
© NASA



© NERC

IceSat
ASTER
Glacier
Radar
Polar
Scientists
Cryosphere
Earth
aging
Reading
July 2011
delling
Ice
Observation
Greenland
uster
NCEO
Antarctica

© NASA



© ESA



National Centre for Earth Observation
NATURAL ENVIRONMENT RESEARCH COUNCIL

Earth Observation Technology Cluster



UK POLAR NETWORK

Why POLAR Remote Sensing?

IceSat
Cryosphere
Remote Sensing
Imaging
Reading
July 2011
Photogrammetry
Modelling
Ice
Observation
Greenland
NCEO
Antarctica
Satellite
Cluster
EOT
Tech
Snow
Change
Climate
Melting
CryosSat
Ocean
Radar
Satellite
IceSat
Cryosphere

- Hard to get to
- Big areas
- Dangerous
- (very) Cold
- Expensive work
- Easy / free data



**National Centre for
Earth Observation**
NATURAL ENVIRONMENT RESEARCH COUNCIL

Earth Observation Technology Cluster

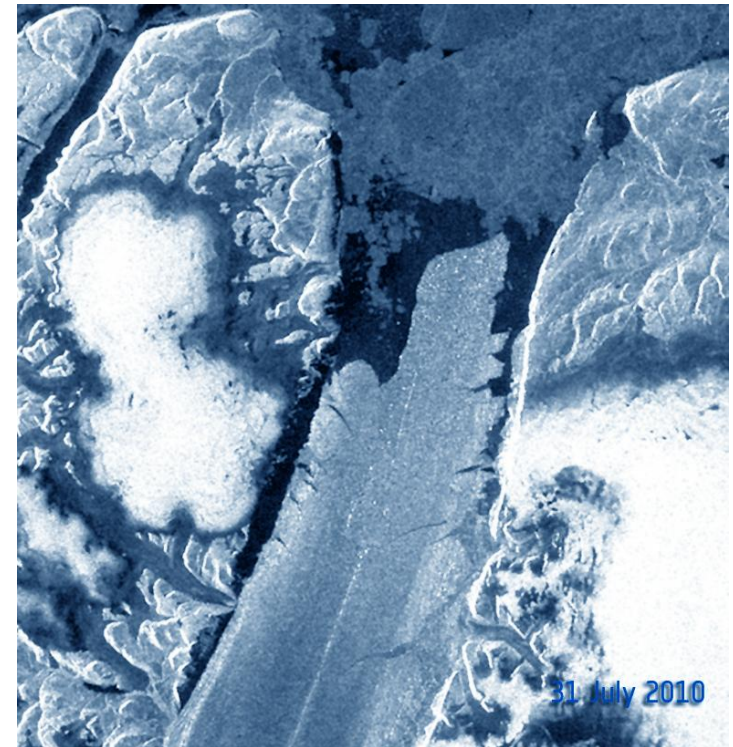


UK POLAR NETWORK

Conclusion



- <http://lance.nasa.gov/imagery/rapid-response/>
- http://earthobservatory.nasa.gov/Features/category.php?cat_id=16
- <http://www.esa.int/esaEO/index.html>
- www.polarnetwork.org
- www.apecs.is
- www.eotechcluster.org.uk



Earth Observation Technology Cluster



**National Centre for
Earth Observation**
NATURAL ENVIRONMENT RESEARCH COUNCIL